



23-24-209

19 January 2024

TO ALL PARENTS/CARERS

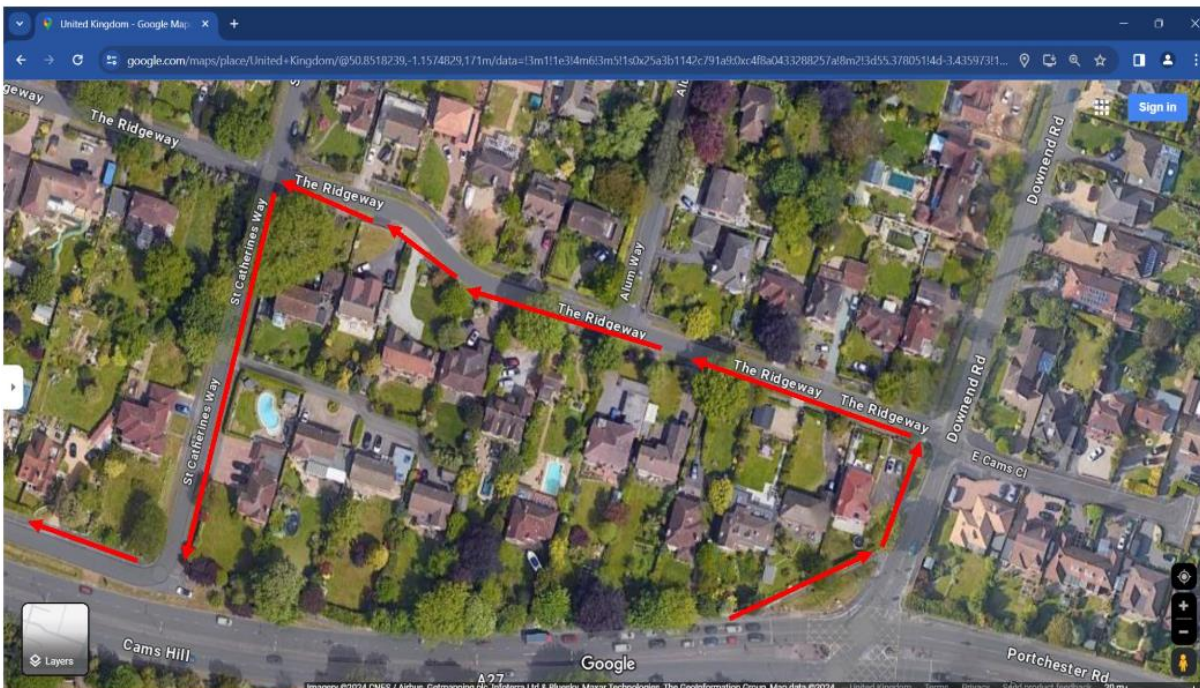
Dear Parent/Carer

A27 Cams Hill Improvement Scheme

Further to our correspondence dated 20 September 2023, I am writing to update you on the information we have been provided by the contractor regarding the next stage of the works taking place on the A27.

On Monday, 29 January 2024, after the pupils have entered the school in the morning, the main footpath on the A27 Westbound side is to be closed. This will mean that all pupils exiting school at the end of the day to head towards Fareham/Delme will have to use the footway on the Eastbound side, adjacent to the A27. To ensure the safety of all pedestrians the foot traffic will be directed via The Ridgeway; the short section of pavement between the Downend crossing and St. Catherines Way. The small section of the Eastbound footpath on the A27 will also be closed/fenced off. These closures will stay in place for a minimum of 12 weeks.

You will see in the picture below; the route pupils will need to take to and from school:



When pupils travel home at the end of the day, on reaching the end of St Catherines Way, they will walk down Cams Hill Road. Pupils that need to cross the road to re-join the A27 Westbound footpath, to head into Fareham will need to cross Cams Hill Road, and then use the traffic lights by the Cams Mill pub to cross the A27. The crossing point nearest to the Delme roundabout will be closed. I strongly advise that if this is your child's route to school, that you take some time to review the route together prior to this change.

Pupils will only be able to enter and leave the school using the Main Entrance and to alleviate congestion at the end of the day we will be slightly revising the finish times, during this period as follows:

Monday, Wednesday, Thursday and Friday

Year 7 & 8 – 14.55

Years 9 & 10 – 15.05

Year 11 – 15.15

Tuesday

Year 7 & 8 – 14.15

Years 9 & 10 – 14.20

Year 11 – 14.25

These revised staggered end times will start from Monday, 29 January 2024. Morning stagger times will remain the same.

In addition to this, a temporary exit will be in place next to the entrance gate to the school's Car Park. This will help manage the flow of pupils at the end of the day and avoid congestion at the traffic lights at the A27 cross roads. This exit will be for pupils walking in the direction of Portchester only. As a school we will help pupils with the new route, but it is important to know staff are not permitted to support pupils to cross roads.

Next week, assemblies will be used to brief pupils on the changes.

I request that parents/carers, during this period, refrain from driving into Shearwater Avenue this will reduce the amount of traffic around the school, and encourage pupils to walk.

For a comprehensive overview of the project, please visit the scheme web page on the link below and review the contractor presentation, which outlines the work phasing, working hours, and a rough schedule. More detailed construction information, including specific dates and traffic management details, and they will update throughout the construction period.

[A27 Cams Hill Improvements | Transport and roads | Hampshire County Council \(hants.gov.uk\)](https://www.hants.gov.uk/transport-and-roads/cams-hill-improvements)

Thank you in anticipation of your support, it is very much appreciated.

Yours sincerely

Mr I Hudson
Headteacher