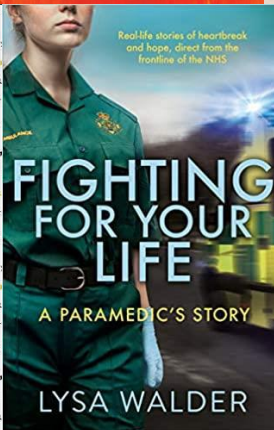
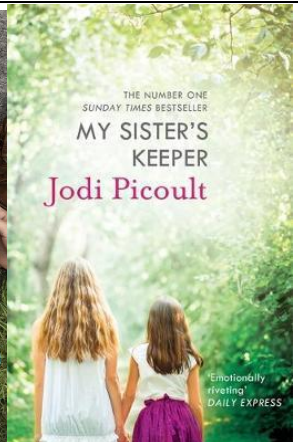
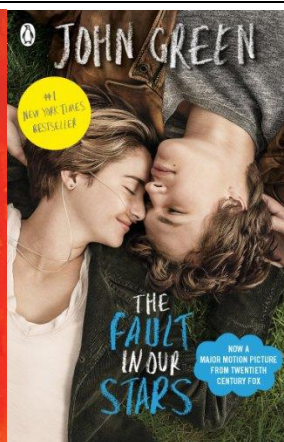
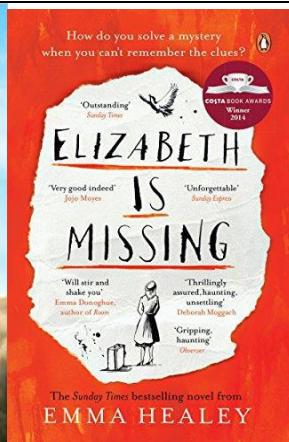
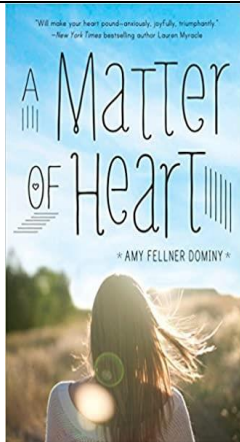




ONCE A HEALTH AND SOCIAL CARE ENTHUSIAST, ALWAYS A HEALTH AND SOCIAL CARE ENTHUSIAST!



If you are going onto study Health and Social Care, we would love for you to continue to stay cognitively engaged over the coming weeks and months, despite the cancellation of this year's exams. The following are suggestions, they are not compulsory, but we would love for you to engage in any that you find interesting.



Teach yourself the Makaton alphabet using the two videos below. See if you can sign your name in Makaton!

<https://www.youtube.com/watch?v=jZUMzGAMyKc>

<https://www.youtube.com/watch?v=Hc93f4Rc-c4>

Using the website below and one of the case study videos, create your own video storyboard to bring awareness to another form of sight loss.

<https://www.rnib.org.uk/>

<https://www.youtube.com/watch?v=bgS4LE2rsxw>

<https://www.youtube.com/watch?v=torsCeXF8T8>



The blind side - Sandra Bullock
Me before you
Five feet apart
The unloved
Care - Sheridan Smith



https://www.hscnewhaven.org/apps/pages/index.jsp?uREC_ID=1066992&type=d&pREC_ID=1692578
<https://www.bbc.co.uk/programmes/b006qxx9/episodes/downloads>



Panorama I Player

- Crisis in Care
- Undercover hospital abuse
- Failed by the NHS Callie's Story
- Three Girls
- Britain's Drink Problem

Dispatches

- Britain's Toxic Air Scandal
- Born on the breadline
- Breast feeding uncovered
- Britain's Benefit crisis and Benefits Britain: Universal Credit
- The truth about your pay
- Wasting away
- Crisis on the wards
- How the rich live longer

Growing up poor: Britain's breadline kids
Young British and Depressed
Britain's Naughtiest nursery
The secret life of 4 year olds
Olly Alexander - Growing up gay
Crisis in care
Losing it - our mental health emergency
Miriam's big fat adventure
Born to be different - Channel 4



- <https://www.cqc.org.uk/what-we-do/services-we-regulate/services-we-regulate>
- https://assets.publishing.service.gov.uk/government/uploads/system/uploads/attachment_data/file/85012/easy-read.pdf
- <https://www.scie.org.uk/socialcaretv/video-player.asp?v=communication>
- <https://www.pacey.org.uk/parents/choosing-great-childcare/types-of-childcare/>
- http://personcentredcare.health.org.uk/sites/default/files/resources/person-centred_care_made_simple_1.pdf
- <https://www.rcpsych.ac.uk/mental-health/treatments-and-wellbeing/spirituality-and-mental-health>
- <https://brightknowledge.org/medicine-and-healthcare/what-is-reflective-practice>
- <https://www.bbc.co.uk/programmes/genres/factual/healthandwellbeing/player/episodes?page=4>