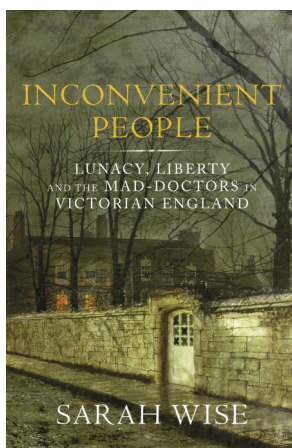
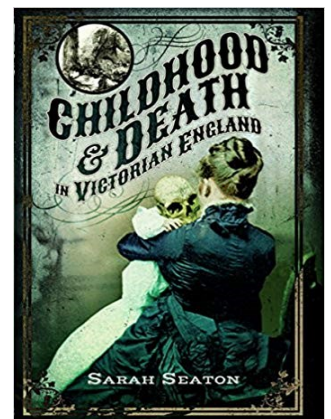
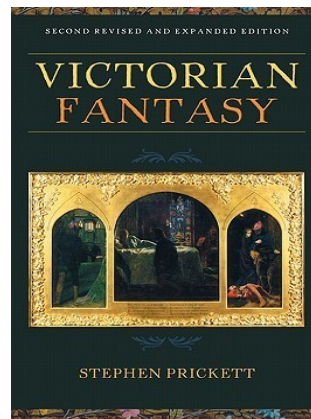
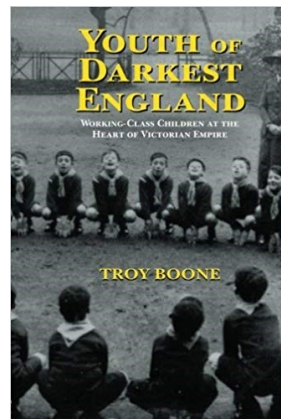
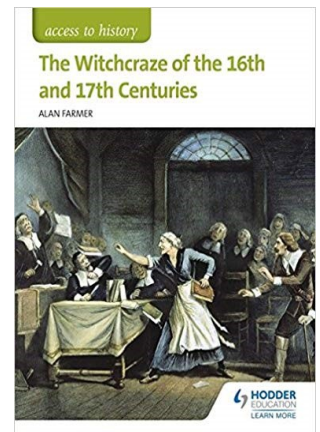
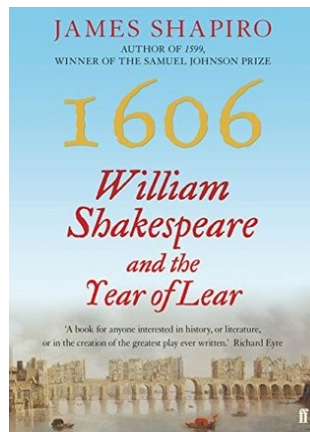
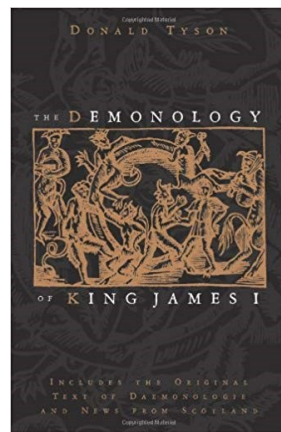
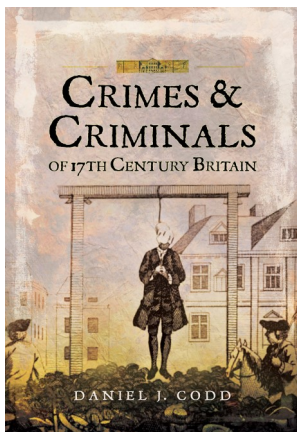


## YEAR 10 & 11

### Read Around Your Subject

**\*ENGLISH\***

Pupils in year 10 and 11 have been studying Macbeth, A Christmas Carol & An Inspector Calls & need to be familiar with themes including James 1, Witchcraft in 17th Century England, Victorian society & the politics of 1930s England.



The Library holds extensive resources for further reading in KS4 and also all relevant revision guides for Literature and Language GCSE.

Open from 7:50 until 3:30 every day.